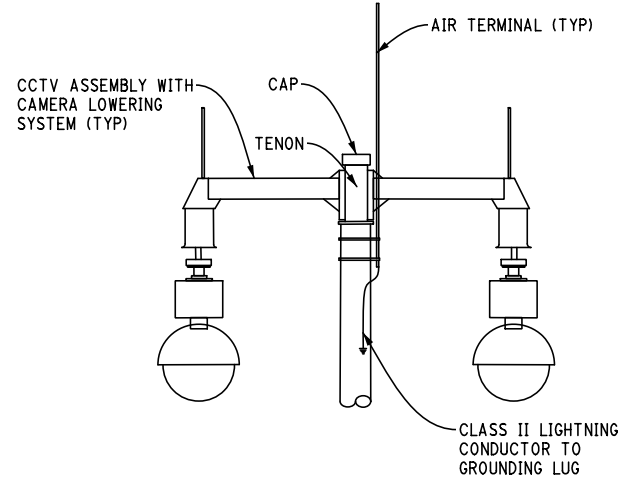
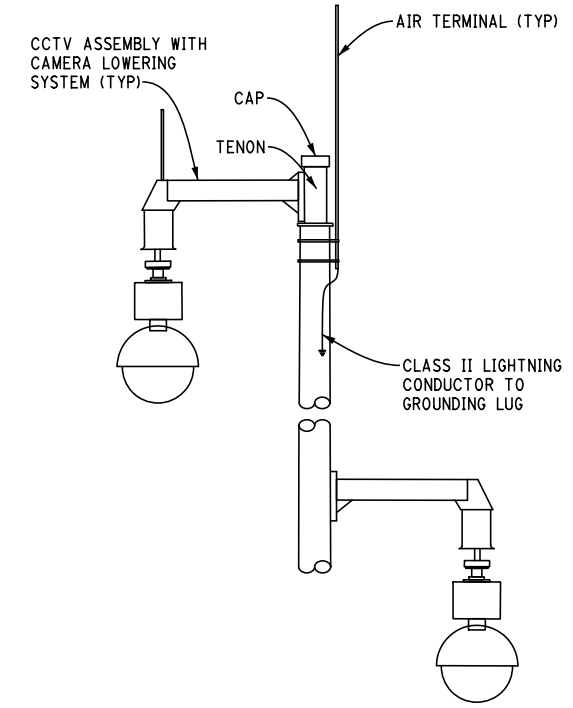


SURVEILLANCE SYSTEM, TYPE A



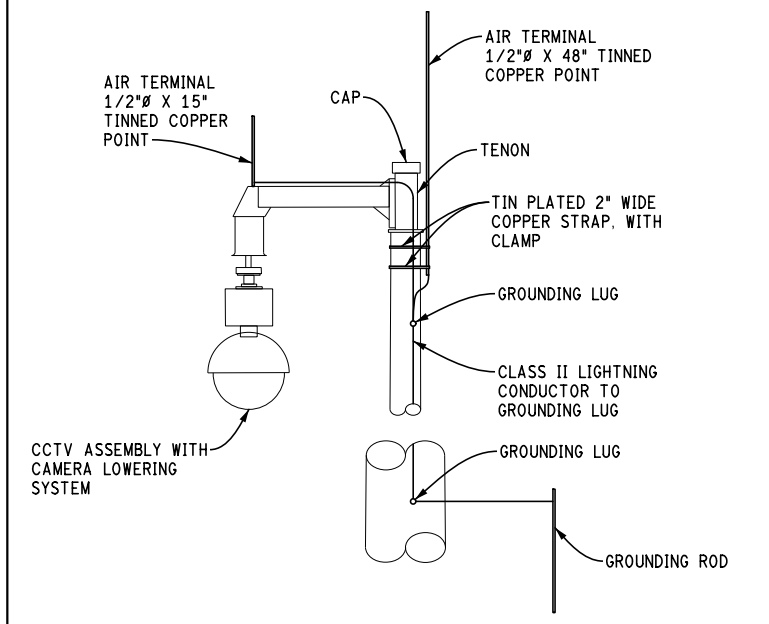
SURVEILLANCE SYSTEM, TYPE B

ORIENT CCTV POLE AS CALLED FOR ON PLANS.



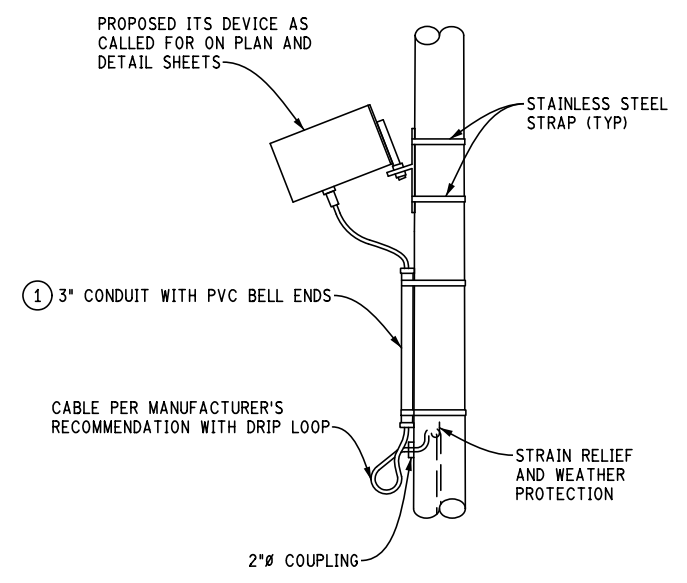
SURVEILLANCE SYSTEM, TYPE C

ORIENT CCTV POLE AS CALLED FOR ON PLANS.



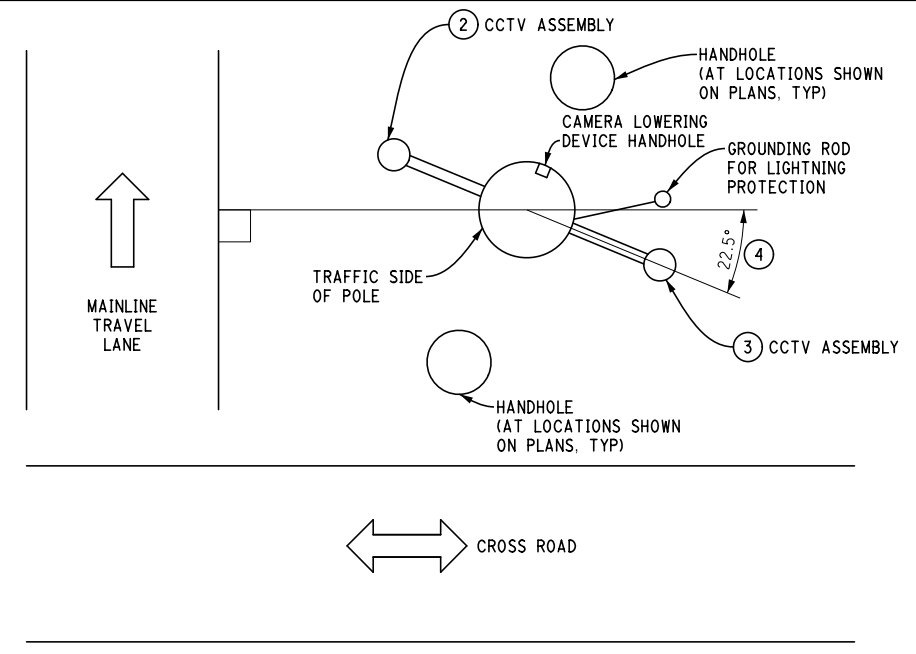
LIGHTNING PROTECTION

SURVEILLANCE SYSTEM, TYPE A SHOWN, TYPES B AND C SIMILAR.
 GROUNDING LUGS ARE TO BE CAST INTO THE POLE.
 USE A LPI CLASS II CONDUCTOR TO CONNECT THE TOP GROUNDING LUG TO THE GROUNDING LUG AT THE BASE OF THE POLE.
 AIR TERMINALS SHALL EXTEND A MINIMUM OF 10 INCHES ABOVE THE POLE.



ACCESSORY POLE-MOUNT DETAIL

① CONDUIT REQUIRED IF DISTANCE FROM PROPOSED ITS DEVICE TO 2" COUPLING IS 3 FEET OR GREATER.



ORIENTATION DIAGRAM

- ② SEE PLANS FOR ORIENTATION ON POLE.
- ③ ORIENT CCTV POLE AS CALLED FOR ON PLANS FOR SPUN CONC POLE, TYPE B AND TYPE C.
- ④ ROTATE CCTV ASSEMBLY 22.5° TOWARDS THE NEREST CROSS ROAD AS CALLED FOR ON THE PLANS.

SURVEILLANCE SYSTEMS

- NOTES:
- 1. ALL CONDUITS AND DUCTS SHALL BE SEALED WITH A RUBBER FITTING OR A WEATHER HEAD.
 - 2. ALL MOUNTING HARDWARE SHALL BE STAINLESS STEEL.

FINAL ROW PLAN REVISIONS (SUBMITTAL DATE:)			
NO.	DATE	AUTH	DESCRIPTION



NO SCALE

PRINT DATE: 2/28/2019
 FILE: Surv Sys- 2-28-2019_ITS040B

DATE:
 DESIGN UNIT:
 TSC:

CS:
 JN: